



TEST REPORT

Report No.: STSGZ2407313005E

Date: 12-Aug-2024

Page 1 of 16

Applicant : Mid Ocean Brands B.V.
Address: 7/F., Kings Tower, 111 King Lam Street, Cheung Sha Wan, Kowloon, Hong Kong

The following sample(s) and sample information was/were submitted and identified by client as:

Sample Name: Pepper grinder in acacia wood
Model: MO6771
Vendor Code: 107978
Receiving Date: 31-Jul-2024
Test Period: 31-Jul-2024 - 8-Aug-2024
Add Information: -

Test Summary:

#	Test Item(s)	Reference Standard/Method	Result
1	Cadmium content -Item 23 of Annex XVII of REACH Regulation (EC) 1907/2006	IEC 62321-5:2013, determined by AAS	PASS
2	Total Lead content -Item 63 of Annex XVII of REACH Regulation (EC) 1907/2006	IEC 62321-5:2013, determined by AAS	PASS
3	Phthalate content (DIBP、DEHP、DBP、BBP、DINP、DIDP、DNOP) -Item 51&52 of Annex XVII of REACH Regulation (EC) 1907/2006.	EN 14372:2004 & IEC 62321-8:2017, determined by GC/MS	PASS
4	Polycyclic-aromatic hydrocarbons (PAHs) content--Item 50 of Annex XVII of REACH Regulation (EC) 1907/2006 & amendment (EU) No 1272/2013	AfPS-GS-2019-01:PAK, determined by GC-MS	PASS

Signed for and on behalf of STS

Mark Mai
(Technical Director)



This report is issued by the company in accordance with the requirements of the "Conditions of Issuance of Test Reports" printed in the attached page. Unless otherwise stated, the results presented in this report only apply to the samples tested this time. Partial reproduction of this report is not allowed unless approved by the company in writing.

Guangzhou Depuhua Test Services Co. Ltd.

A301&A401, 3/F.&4/F., Xinghui Building, Guanqiao, Shilou, Panyu District, Guangzhou, Guangdong, China
Phone: +86 (0)20-6664 1688 Fax: +86 (0)20-6664 1699 Web: <http://www.dphtl.com/>

e-mail: stsgz@stsapp.com



TEST REPORT

Report No.: STSGZ2407313005E

Date: 12-Aug-2024

Page 2 of 16

#	Test Item(s)	Reference Standard/Method	Result
Regulation (EC) No 1935/2004, the Commission Regulation (EU) No 10/2011 and its amendment (EU)2023/1442 and (EU) 2018/213 - For Plastic Material			
5	Overall migration	BS EN 1186-13:2002	PASS
6	Specific migration of Heavy Metal	EN 13130-1: 2004, determined by ICP-OES	PASS
7	Specific migration of Primary Aromatic Amine	EN 13130-1:2004, determined by LC-MS/MS	PASS
8	Bisphenol A (BPA) content- Client's requirement	In-house Method,determined by LC/MS/MS	PASS
Regulation (EC) No 1935/2004, and the Commission Regulation AP(2004)2			
9	Specific Migration of Formaldehyde	EN 1541:2001, cold water extraction and determined by UV-Vis	PASS
10	Pentachlorophenol (PCP)	§ 64 LFGB, BVL B 82.02.8:2001	PASS
Regulation (EC) No 1935/2004, the Council of Europe Directive 84/500/EEC and its amendment 2005/31/EC - For Glass Material			
11	Extractable Lead, Cadmium	84/500/EEC, determined by AAS	PASS
Regulation (EC) No 1935/2004, Council of Europe Resolution CMRes(2013)9 -For Metal Material			
12	Specific Release of Heavy Metals	reference to CM/Res(2013)9, determined by ICP-MS.	PASS

Result:

1. Cadmium content -Item 23 of Annex XVII of REACH Regulation (EC) 1907/2006 IEC 62321-5:2013, determined by AAS

Compound		Material	Limit (mg/kg)	RL (mg/kg)
		7		
1	Cadmium (Cd) CAS#7440-43-9	N.D.	100	10
Conclusion		PASS	-	-

Compound		Material	Limit (mg/kg)	RL (mg/kg)
		1		
1	Cadmium (Cd) CAS#7440-43-9	N.D.	1000	10
Conclusion		PASS	-	-

This report is issued by the company in accordance with the requirements of the "Conditions of Issuance of Test Reports" printed in the attached page. Unless otherwise stated, the results presented in this report only apply to the samples tested this time. Partial reproduction of this report is not allowed unless approved by the company in writing.

Guangzhou Depuhua Test Services Co. Ltd.

A301&A401, 3/F.&4/F., Xinghui Building, Guanqiao, Shilou, Panyu District, Guangzhou, Guangdong, China

e-mail: stsgz@stsap.com

Phone: +86 (0)20-6664 1688

Fax: +86 (0)20-6664 1699

Web:http://www.dpht.com/



TEST REPORT

Report No.: STSGZ2407313005E

Date: 12-Aug-2024

Page 3 of 16

Remark(s): (a) mg/kg: milligram per kilogram
 (b) RL: Report limit
 (c) N.D.: Not detected (result is less than RL)

2. Total Lead content -Item 63 of Annex XVII of REACH Regulation (EC) 1907/2006 IEC 62321-5:2013, determined by AAS

Compound		Material					Limit (mg/kg)	RL (mg/kg)
		1	2	3	4	5		
1	Lead(Pb) CAS#7439-92-1	N.D.	N.D.	N.D.	N.D.	N.D.	500	10
Conclusion		PASS	PASS	PASS	PASS	PASS	-	-

Compound		Material						Limit (mg/kg)	RL (mg/kg)
		6	7	8	9	10	11		
1	Lead(Pb) CAS#7439-92-1	N.D.	N.D.	N.D.	N.D.	N.D.	36	500	10
Conclusion		PASS	PASS	PASS	PASS	PASS	PASS	-	-

Remark(s): (a) mg/kg: milligram per kilogram
 (b) RL: Report limit
 (c) N.D.: Not detected (result is less than RL)

3. Phthalate content (DIBP、DEHP、DBP、BBP、DINP、DIDP、DNOP) - Item 51& 52 of Annex XVII of REACH Regulation (EC) 1907/2006 EN 14372:2004 & IEC 62321-8:2017, determined by GC/MS

Compound			Material		Limit (%)	RL (%)
			1	7		
1	DBP	Dibutyl Phthalate CAS# 84-74-2	N.D.	N.D.	0.1	0.005
2	BBP	Benzylbutyl Phthalate CAS# 85-68-7	N.D.	N.D.	0.1	0.005
3	DEHP	Bis-(2-ethylhexyl)Phthalate CAS# 117-81-7	N.D.	N.D.	0.1	0.005
4	DIBP	Diisobutyl phthalate CAS# 84-69-5	N.D.	N.D.	0.1	0.005
5	DNOP	Di-n-octyl phthalate CAS# 117-84-0	N.D.	N.D.	-	0.005
6	DINP	Di-iso-nonyl phthalate CAS# 28553-12-0	N.D.	N.D.	-	0.005

This report is issued by the company in accordance with the requirements of the "Conditions of Issuance of Test Reports" printed in the attached page. Unless otherwise stated, the results presented in this report only apply to the samples tested this time. Partial reproduction of this report is not allowed unless approved by the company in writing.

Guangzhou Depuhua Test Services Co. Ltd.

A301&A401, 3/F.&4/F., Xinghui Building, Guanqiao, Shilou, Panyu District, Guangzhou, Guangdong, China
 Phone: +86 (0)20-6664 1688 Fax: +86 (0)20-6664 1699

Web: <http://www.dphtl.com/>e-mail: stsgz@stsapp.com



TEST REPORT

Report No.: STSGZ2407313005E

Date: 12-Aug-2024

Page 4 of 16

7	DIDP	Diisodecyl phthalate CAS# 26761-40-0	N.D.	N.D.	-	0.005
8	Sum of 1, 2, 3 & 4		N.D.	N.D.	0.1	-
9	Sum of 5, 6 & 7		N.D.	N.D.	0.1	-
Conclusion			PASS	PASS	-	-

Remark(s): (a) RL: Report limit
(b) N.D.: Not detected (result is less than RL)

4. Polycyclic-aromatic hydrocarbons (PAHs) content - Item 50 of Annex XVII of REACH Regulation (EC) 1907/2006 & amendment (EU) No 1272/2013 AfPS-GS-2019-01:PAK, determined by GC-MS

Compound	Material		Limit (mg/kg)	RL (mg/kg)	
	Category I **				
	1	7			
1	Benz[a]anthracene(BaA) CAS#56-55-3	N.D.	N.D.	1	0.2
2	Chrysene(CHR) CAS#218-01-9	N.D.	N.D.	1	0.2
3	Benz[b]fluoranthene(BbFA) CAS#205-99-2	N.D.	N.D.	1	0.2
4	Benz[k]fluoranthene(BkFA) CAS#207-08-9	N.D.	N.D.	1	0.2
5	Benz[j]fluoranthene(BjFA) CAS#205-82-3	N.D.	N.D.	1	0.2
6	Benzo[a]pyrene(BaP) CAS#50-32-8	N.D.	N.D.	1	0.2
7	Benzo[e]pyrene(BeP) CAS#192-97-2	N.D.	N.D.	1	0.2
8	Dibenz [a,h]anthracene (DBahA) CAS#53-70-3	N.D.	N.D.	1	0.2
Conclusion		PASS	PASS	-	-

Remark: (a) mg/kg: milligram per kilogram
(b) RL: Report limit
(c) N.D.: Not detected (result is less than RL)
1: Material category

Category I: Articles come into direct as well as prolonged or short-term repetitive contact with the human skin or the oral cavity, under normal or reasonably foreseeable conditions of use.

Category II : Toys, including activity toys, and childcare articles, that come into direct as well as prolonged or short-term repetitive contact with the human skin or the oral cavity, under normal or reasonably foreseeable conditions of use.

This report is issued by the company in accordance with the requirements of the "Conditions of Issuance of Test Reports" printed in the attached page. Unless otherwise stated, the results presented in this report only apply to the samples tested this time. Partial reproduction of this report is not allowed unless approved by the company in writing.

Guangzhou Depuhua Test Services Co. Ltd.

A301&A401, 3/F.&4/F., Xinghui Building, Guanqiao, Shilou, Panyu District, Guangzhou, Guangdong, China

Phone: +86 (0)20-6664 1688

Fax: +86 (0)20-6664 1699

Web: <http://www.dpht.com/>e-mail: stsgz@stsapp.com



TEST REPORT

Report No.: STSGZ2407313005E

Date: 12-Aug-2024

Page 5 of 16

Regulation (EC) No 1935/2004, the Commission Regulation (EU) No 10/2011 and its amendment (EU)2023/1442 and (EU) 2018/213 - For Plastic Material

5. Overall migration BS EN 1186-13:2002

Test Item(s)	Result			Limit (mg/dm ²)	RL (mg/dm ²)
	7				
	1 st	2 nd	3 rd		
1 Poly(2,6-diphenyl-p-phenylene oxide),40°C , 0.5h	N.D.	N.D.	N.D.	10	3
Conclusion	-	-	PASS	-	-

Remark(s): (a) mg/dm²: milligram square decimetre
 (b) RL: Report limit
 (c) N.D.: Not detected (result is less than RL)

6. Specific migration of Heavy Metal EN 13130-1: 2004, determined by ICP-OES

Test condition: 3%Acetic acid, 40°C, 0.5h

Test Item(s)	Result(s)			Limit (mg/kg)	RL (mg/kg)
	7				
	1 st	2 nd	3 rd		
1 Aluminum (Al)	N.D.	N.D.	N.D.	1	0.1
2 Ammonium	N.D.	N.D.	N.D.	-	0.1
3 Antimony (Sb)	N.D.	N.D.	N.D.	0.04	0.01
4 Arsenic (As)	N.D.	N.D.	N.D.	Not Detected	0.01
5 Barium (Ba)	N.D.	N.D.	N.D.	1	0.1
6 Cadmium(Cd)	N.D.	N.D.	N.D.	Not Detected	0.002
7 Calcium(Ca)	N.D.	N.D.	N.D.	-	0.1
8 Chromium (Cr)	N.D.	N.D.	N.D.	Not Detected	0.01
9 Cobalt (Co)	N.D.	N.D.	N.D.	0.05	0.01
10 Copper (Cu)	N.D.	N.D.	N.D.	5	0.5

This report is issued by the company in accordance with the requirements of the "Conditions of Issuance of Test Reports" printed in the attached page. Unless otherwise stated, the results presented in this report only apply to the samples tested this time. Partial reproduction of this report is not allowed unless approved by the company in writing.

Guangzhou Depuhua Test Services Co. Ltd.

A301&A401, 3/F.&4/F., Xinghui Building, Guanqiao, Shilou, Panyu District, Guangzhou, Guangdong, China
 Phone: +86 (0)20-6664 1688 Fax: +86 (0)20-6664 1699

Web: <http://www.dpht.com/>e-mail: stsgz@stsgz.com



TEST REPORT

Report No.: STSGZ2407313005E

Date: 12-Aug-2024

Page 6 of 16

11	Europium (Eu)	N.D.	N.D.	N.D.	0.05*	0.01
12	Gadolinium (Gd)	N.D.	N.D.	N.D.	0.05*	0.01
13	Iron (Fe)	N.D.	N.D.	N.D.	48	1
14	Lanthanum (La)	N.D.	N.D.	N.D.	0.05*	0.01
15	Lead(Pb)	N.D.	N.D.	N.D.	Not Detected	0.01
16	Lithium (Li)	N.D.	N.D.	N.D.	0.6	0.1
17	Magnesium(Mg)	N.D.	N.D.	N.D.	-	0.1
18	Manganese (Mn)	N.D.	N.D.	N.D.	0.6	0.05
19	Mercury(Hg)	N.D.	N.D.	N.D.	Not Detected	0.01
20	Nickel (Ni)	N.D.	N.D.	N.D.	0.02	0.01
21	Potassium(K)	N.D.	N.D.	N.D.	-	0.1
22	Sodium(Na)	N.D.	N.D.	N.D.	-	0.1
23	Terbium (Tb)	N.D.	N.D.	N.D.	0.05*	0.01
24	Zinc (Zn)	N.D.	N.D.	N.D.	5	1
Conclusion		-	-	PASS	-	-

Remark(s): (a) mg/kg: milligram per kilogram
 (b) RL: Report limit
 (c) N.D.: Not detected (result is less than RL)
 (d)*:The sum of all lanthanide substances migrating to the food or food simulant does not exceed the specific migration limit of 0,05 mg/kg

7. Specific migration of Primary Aromatic Amine EN 13130-1:2004, determined by LC-MS/MS

Test Condition: 3%Acetic acid, 40 °C, 0.5h

Test Item(s)	Result(s)			Limit (mg/kg)	RL (mg/kg)
	7				
	1 st	2 nd	3 rd		
1 Primary Aromatic Amines(PAAs)	N.D.	N.D.	N.D.	0.01	0.002
Conclusion	-	-	PASS	-	-

This report is issued by the company in accordance with the requirements of the "Conditions of Issuance of Test Reports" printed in the attached page. Unless otherwise stated, the results presented in this report only apply to the samples tested this time. Partial reproduction of this report is not allowed unless approved by the company in writing.

Guangzhou Depuhua Test Services Co. Ltd.

A301&A401, 3/F.&4/F., Xinghui Building, Guanqiao, Shilou, Panyu District, Guangzhou, Guangdong, China
 Phone: +86 (0)20-6664 1688 Fax: +86 (0)20-6664 1699 Web: <http://www.dphtl.com/>

e-mail: stsgz@ststapp.com



TEST REPORT

Report No.: STSGZ2407313005E

Date: 12-Aug-2024

Page 7 of 16

Test Item(s)	Result(s)			Limit (mg/kg)	RL (mg/kg)
	7				
	1 st	2 nd	3 rd		
1 biphenyl-4-ylamine 4- aminobiphenyl xenylamine CAS# 92-67-1	N.D.	N.D.	N.D.	0.01	0.002
2 Benzidine CAS# 92-87-5	N.D.	N.D.	N.D.	0.01	0.002
3 4-chloro-o-toluidine CAS# 95-69-2	N.D.	N.D.	N.D.	0.01	0.002
4 2-Naphthylamine CAS# 91-59-8	N.D.	N.D.	N.D.	0.01	0.002
5 o-aminoazotoluene 4- amino-2',3- dimethylazobenzene 4-o-tolylazo-o-toluidine CAS# 97-56-3	N.D.	N.D.	N.D.	0.01	0.002
6 5-nitro-o-toluidine CAS# 99-55-8	N.D.	N.D.	N.D.	0.01	0.002
7 5-Chloroaniline CAS# 106-47-8	N.D.	N.D.	N.D.	0.01	0.002
8 4-methoxy-m-phenylenediamine CAS# 615-05-4	N.D.	N.D.	N.D.	0.01	0.002
9 4,4'-methylenedianiline 4,4'-diaminodiphenylmethane CAS# 101-77-9	N.D.	N.D.	N.D.	0.01	0.002
10 3,3'-dichlorobenzidine 3,3'-dichlorobiphenyl-4,4'-ylenediamine CAS# 91-94-1	N.D.	N.D.	N.D.	0.01	0.002
11 3,3'-dimethoxybenzidine o-dianisidine CAS# 119-90-4	N.D.	N.D.	N.D.	0.01	0.002
12 3,3'-dimethylbenzidine 4,4'-bi-o-toluidine CAS# 119-93-7	N.D.	N.D.	N.D.	0.01	0.002
13 4,4'-methylenedi-o-toluidine CAS# 838-88-0	N.D.	N.D.	N.D.	0.01	0.002
14 6-methoxy-m-toluidine p- cresidine CAS# 120-71-8	N.D.	N.D.	N.D.	0.01	0.002
15 4,4'-methylene-bis-(2-chloro- aniline) 2,2'-dichloro-4,4'-methylene- dianiline CAS# 101-14-4	N.D.	N.D.	N.D.	0.01	0.002
16 4,4'-oxydianiline CAS# 101-80-4	N.D.	N.D.	N.D.	0.01	0.002
17 4,4'-thiodianiline CAS# 139-65-1	N.D.	N.D.	N.D.	0.01	0.002

This report is issued by the company in accordance with the requirements of the "Conditions of Issuance of Test Reports" printed in the attached page. Unless otherwise stated, the results presented in this report only apply to the samples tested this time. Partial reproduction of this report is not allowed unless approved by the company in writing.

Guangzhou Depuhua Test Services Co. Ltd.

A301&A401, 3/F.&4/F., Xinghui Building, Guanqiao, Shilou, Panyu District, Guangzhou, Guangdong, China
Phone: +86 (0)20-6664 1688 Fax: +86 (0)20-6664 1699Web: <http://www.dphtl.com/>e-mail: stsgz@ststapp.com



TEST REPORT

Report No.: STSGZ2407313005E

Date: 12-Aug-2024

Page 8 of 16

18	o-toluidine 2-aminotoluene CAS# 95-53-4	N.D.	N.D.	N.D.	0.01	0.002
19	4-methyl-m-phenylenediamine CAS# 95-80-7	N.D.	N.D.	N.D.	0.01	0.002
20	2,4,5-trimethylaniline CAS# 137-17-7	N.D.	N.D.	N.D.	0.01	0.002
21	o-anisidine 2-methoxyaniline CAS# 90-04-0	N.D.	N.D.	N.D.	0.01	0.002
22	4-amino azobenzene CAS# 60-09-3	N.D.	N.D.	N.D.	0.01	0.002
23	1,5- Diaminenaphthalene CAS# 2242-62-01	N.D.	N.D.	N.D.	0.01	0.002
24	Aniline (ANL) CAS# 62-53-3	N.D.	N.D.	N.D.	0.01	0.002
25	2,4-Dimethylaniline (2,4-DMA) CAS# 95-68-1	N.D.	N.D.	N.D.	0.01	0.002
26	2,6-Dimethylaniline (2,6-DMA) CAS# 87-62-7	N.D.	N.D.	N.D.	0.01	0.002
27	m-Phenylenediamine (m- PDA) CAS# 108-45-2	N.D.	N.D.	N.D.	0.01	0.002
28	p-Phenylenediamine (p-PDA) CAS# 106-50-3	N.D.	N.D.	N.D.	0.01	0.002
29	2,6-Toluenediamine (2,6- TDA) CAS# 823-40-5	N.D.	N.D.	N.D.	0.01	0.002

Remark(s): (a) mg/kg: milligram per kilogram
 (b) RL: Report limit
 (c) N.D.: Not detected (result is less than RL)

8. Bisphenol A Contents - Client's requirement In-house Method, determined by LC-MS-MS

Test Item		Result	Limit (mg/kg)	RL (mg/kg)
		7		
1	Bisphenol A	N.D.	Not Detected	0.1
Conclusion		PASS	-	-

Remark(s): (a) mg/kg: milligram per kilogram
 (b) RL: Report limit
 (c) N.D.: Not detected (result is less than RL)

This report is issued by the company in accordance with the requirements of the "Conditions of Issuance of Test Reports" printed in the attached page. Unless otherwise stated, the results presented in this report only apply to the samples tested this time. Partial reproduction of this report is not allowed unless approved by the company in writing.

Guangzhou Depuhua Test Services Co. Ltd.

A301&A401, 3/F.&4/F., Xinghui Building, Guanqiao, Shilou, Panyu District, Guangzhou, Guangdong, China

e-mail: stsgz@ststapp.com

Phone: +86 (0)20-6664 1688

Fax: +86 (0)20-6664 1699

Web: http://www.dpht.com/



TEST REPORT

Report No.: STSGZ2407313005E

Date: 12-Aug-2024

Page 9 of 16

Regulation (EC) No 1935/2004, and the Commission Regulation AP(2004)2

9. Specific Migration of Formaldehyde
EN 1541:2001, cold water extraction and determined by UV-Vis

Test Item	Result			Limit (mg/kg)	RL (mg/kg)	
	2					
	1 st	2 nd	3 rd			
1	Formaldehyde	N.D.	N.D.	N.D.	15	1
Conclusion		-	-	PASS	-	-

Remark(s): (a) mg/kg: milligram per kilogram
(b) RL: Report limit
(c) N.D.: Not detected (result is less than RL)

10. Pentachlorophenol (PCP)
Reference § 64 LFGB, BVL B 82.02.8:2001

Test Item	Result			Limit (mg/kg)	RL (mg/kg)	
	2					
1	Pentachlorophenol CAS# 87-86-5	N.D.			0.1	0.1
Conclusion		PASS			-	-

Remark(s): (a) mg/kg: milligram per kilogram
(b) RL: Report limit
(c) N.D.: Not detected (result is less than RL)

This report is issued by the company in accordance with the requirements of the "Conditions of Issuance of Test Reports" printed in the attached page. Unless otherwise stated, the results presented in this report only apply to the samples tested this time. Partial reproduction of this report is not allowed unless approved by the company in writing.

Guangzhou Depuhua Test Services Co. Ltd.

A301&A401, 3/F.&4/F., Xinghui Building, Guanqiao, Shilou, Panyu District, Guangzhou, Guangdong, China
Phone: +86 (0)20-6664 1688 Fax: +86 (0)20-6664 1699 Web: <http://www.dphtl.com/>

e-mail: stsgz@stsapp.com



TEST REPORT

Report No.: STSGZ2407313005E

Date: 12-Aug-2024

Page 10 of 16

Regulation (EC) No 1935/2004, the Council of Europe Directive 84/500/EEC and its amendment 2005/31/EC - For Glass Material

11. Extractable Lead, Cadmium 84/500/EEC, determined by AAS

Test Condition: 4% Acetic acid, 22°C, 24h

Test Item(s)		Result(s)	Limit (mg/dm ²)	RL (mg/dm ²)
		5		
1	Lead (Pb)	N.D.	0.8	0.1
2	Cadmium (Cd)	N.D.	0.07	0.01
Conclusion		PASS	-	-

Remark(s): (b) RL: Report limit
(c) N.D.: Not detected (result is less than RL)
(d) mg/dm²: milligram square decimetre

Regulation (EC) No 1935/2004, Council of Europe Resolution CMRes(2013)9 -For Metal Material

12. Specific Migration of Heavy Metal reference to CM/Res(2013)9, determined by ICP-MS.

Test condition: Artificial tap water, 40°C, 24h

Test Item(s)		Result(s)		Limit (mg/kg)		RL (mg/kg)	
		4		1 st + 2 nd	3 rd	1 st + 2 nd	3 rd
		1 st + 2 nd	3 rd				
1	Tin (Sn)	N.D.	N.D.	700	100	2	1
2	Copper (Cu)	N.D.	N.D.	28	4	2	1
3	Iron (Fe)	N.D.	N.D.	280	40	2	1
4	Manganese (Mn)	N.D.	N.D.	12.6	1.8	0.2	0.1
5	Zinc (Zn)	N.D.	N.D.	35	5	2	1
6	Aluminum (Al)	N.D.	N.D.	35	5	2	1
7	Barium (Ba)	N.D.	N.D.	8.4	1.2	0.2	0.1

This report is issued by the company in accordance with the requirements of the "Conditions of Issuance of Test Reports" printed in the attached page. Unless otherwise stated, the results presented in this report only apply to the samples tested this time. Partial reproduction of this report is not allowed unless approved by the company in writing.

Guangzhou Depuhua Test Services Co. Ltd.

A301&A401, 3/F.&4/F., Xinghui Building, Guanqiao, Shilou, Panyu District, Guangzhou, Guangdong, China
Phone: +86 (0)20-6664 1688 Fax: +86 (0)20-6664 1699

Web: <http://www.dpht.com/>

e-mail: stsgz@ststapp.com



TEST REPORT

Report No.: STSGZ2407313005E

Date: 12-Aug-2024

Page 11 of 16

8	Chromium (Cr)	N.D.	N.D.	1.75	0.25	0.1	0.05
9	Nickel (Ni)	N.D.	N.D.	0.98	0.14	0.1	0.05
10	Lithium (Li)	N.D.	N.D.	0.336	0.048	0.02	0.01
11	Beryllium (Be)	N.D.	N.D.	0.07	0.01	0.002	0.001
12	Vanadium (V)	N.D.	N.D.	0.07	0.01	0.002	0.001
13	Cobalt (Co)	N.D.	N.D.	0.14	0.02	0.002	0.001
14	Molybdenum (Mo)	N.D.	N.D.	0.84	0.12	0.02	0.01
15	Silver (Ag)	N.D.	N.D.	0.56	0.08	0.02	0.01
16	Antimony (Sb)	N.D.	N.D.	0.28	0.04	0.02	0.01
17	Lead (Pb)	N.D.	N.D.	0.07	0.01	0.002	0.001
18	Arsenic (As)	N.D.	N.D.	0.014	0.002	0.002	0.001
19	Cadmium (Cd)	N.D.	N.D.	0.035	0.005	0.002	0.001
20	Mercury (Hg)	N.D.	N.D.	0.021	0.003	0.002	0.001
21	Thallium (Tl)	N.D.	N.D.	0.0007	0.0001	0.0002	0.0001
22	Magnesium (Mg)	N.D.	N.D.	-	-	2	1
23	Titanium (Ti)	N.D.	N.D.	-	-	2	1
Conclusion		PASS	PASS	-	-	-	-

Test condition: 0.5% Citric acid, 40°C, 0.5h

Test Item(s)	Result(s)		Limit (mg/kg)		RL (mg/kg)	
	8		1 st + 2 nd	3 rd	1 st + 2 nd	3 rd
	1 st + 2 nd	3 rd				
1 Tin (Sn)	N.D.	N.D.	700	100	2	1
2 Copper (Cu)	N.D.	N.D.	28	4	2	1
3 Iron (Fe)	N.D.	N.D.	280	40	2	1
4 Manganese (Mn)	N.D.	N.D.	12.6	1.8	0.2	0.1

This report is issued by the company in accordance with the requirements of the "Conditions of Issuance of Test Reports" printed in the attached page. Unless otherwise stated, the results presented in this report only apply to the samples tested this time. Partial reproduction of this report is not allowed unless approved by the company in writing.

Guangzhou Depuhua Test Services Co. Ltd.

A301&A401, 3/F.&4/F., Xinghui Building, Guanqiao, Shilou, Panyu District, Guangzhou, Guangdong, China
Phone: +86 (0)20-6664 1688 Fax: +86 (0)20-6664 1699

Web: <http://www.dphtl.com/>

e-mail: stsgz@ststapp.com



TEST REPORT

Report No.: STSGZ2407313005E

Date: 12-Aug-2024

Page 12 of 16

5	Zinc (Zn)	N.D.	N.D.	35	5	2	1
6	Aluminum (Al)	N.D.	N.D.	35	5	2	1
7	Barium (Ba)	N.D.	N.D.	8.4	1.2	0.2	0.1
8	Chromium (Cr)	N.D.	N.D.	1.75	0.25	0.1	0.05
9	Nickel (Ni)	N.D.	N.D.	0.98	0.14	0.1	0.05
10	Lithium (Li)	N.D.	N.D.	0.336	0.048	0.02	0.01
11	Beryllium (Be)	N.D.	N.D.	0.07	0.01	0.002	0.001
12	Vanadium (V)	N.D.	N.D.	0.07	0.01	0.002	0.001
13	Cobalt (Co)	N.D.	N.D.	0.14	0.02	0.002	0.001
14	Molybdenum (Mo)	N.D.	N.D.	0.84	0.12	0.02	0.01
15	Silver (Ag)	N.D.	N.D.	0.56	0.08	0.02	0.01
16	Antimony (Sb)	N.D.	N.D.	0.28	0.04	0.02	0.01
17	Lead (Pb)	N.D.	N.D.	0.07	0.01	0.002	0.001
18	Arsenic (As)	N.D.	N.D.	0.014	0.002	0.002	0.001
19	Cadmium (Cd)	N.D.	N.D.	0.035	0.005	0.002	0.001
20	Mercury (Hg)	N.D.	N.D.	0.021	0.003	0.002	0.001
21	Thallium (Tl)	N.D.	N.D.	0.0007	0.0001	0.0002	0.0001
22	Magnesium (Mg)	N.D.	N.D.	-	-	2	1
23	Titanium (Ti)	N.D.	N.D.	-	-	2	1
	Conclusion	PASS	PASS	-	-	-	-

Remark(s): (a) mg/kg: milligram per kilogram
(b) RL: Report limit
(c) N.D.: Not detected (result is less than RL)

This report is issued by the company in accordance with the requirements of the "Conditions of Issuance of Test Reports" printed in the attached page. Unless otherwise stated, the results presented in this report only apply to the samples tested this time. Partial reproduction of this report is not allowed unless approved by the company in writing.

Guangzhou Depuhua Test Services Co. Ltd.

A301&A401, 3/F.&4/F., Xinghui Building, Guanqiao, Shilou, Panyu District, Guangzhou, Guangdong, China
Phone: +86 (0)20-6664 1688 Fax: +86 (0)20-6664 1699

e-mail: stsgz@stsapp.com

Web: <http://www.dphtl.com/>



TEST REPORT

Report No.: STSGZ2407313005E

Date: 12-Aug-2024

Page 13 of 16

Material List:

Material #	Position / Sample Description	Material
1	Transparent coating,shell	-
2	Brown wood,shell	wood
3	Silvery metal,washer	-
4	Silvery metal,stick	aluminum
5	White ceramic,stick holder	ceramic
6	White ceramic,ring	-
7	Transparent plastic,cover	PP
8	Silvery metal,cover	Stainless steel
9	Silvery metal,screw	-
10	Silvery metal,spring	-
11	Silvery metal,nut	-

This report is issued by the company in accordance with the requirements of the "Conditions of Issuance of Test Reports" printed in the attached page. Unless otherwise stated, the results presented in this report only apply to the samples tested this time. Partial reproduction of this report is not allowed unless approved by the company in writing.

Guangzhou Depuhua Test Services Co. Ltd.

A301&A401, 3/F.&4/F., Xinghui Building, Guanqiao, Shilou, Panyu District, Guangzhou, Guangdong, China
Phone: +86 (0)20-6664 1688 Fax: +86 (0)20-6664 1699

Web:<http://www.dphtl.com/>

e-mail: stsgz@stsapp.com



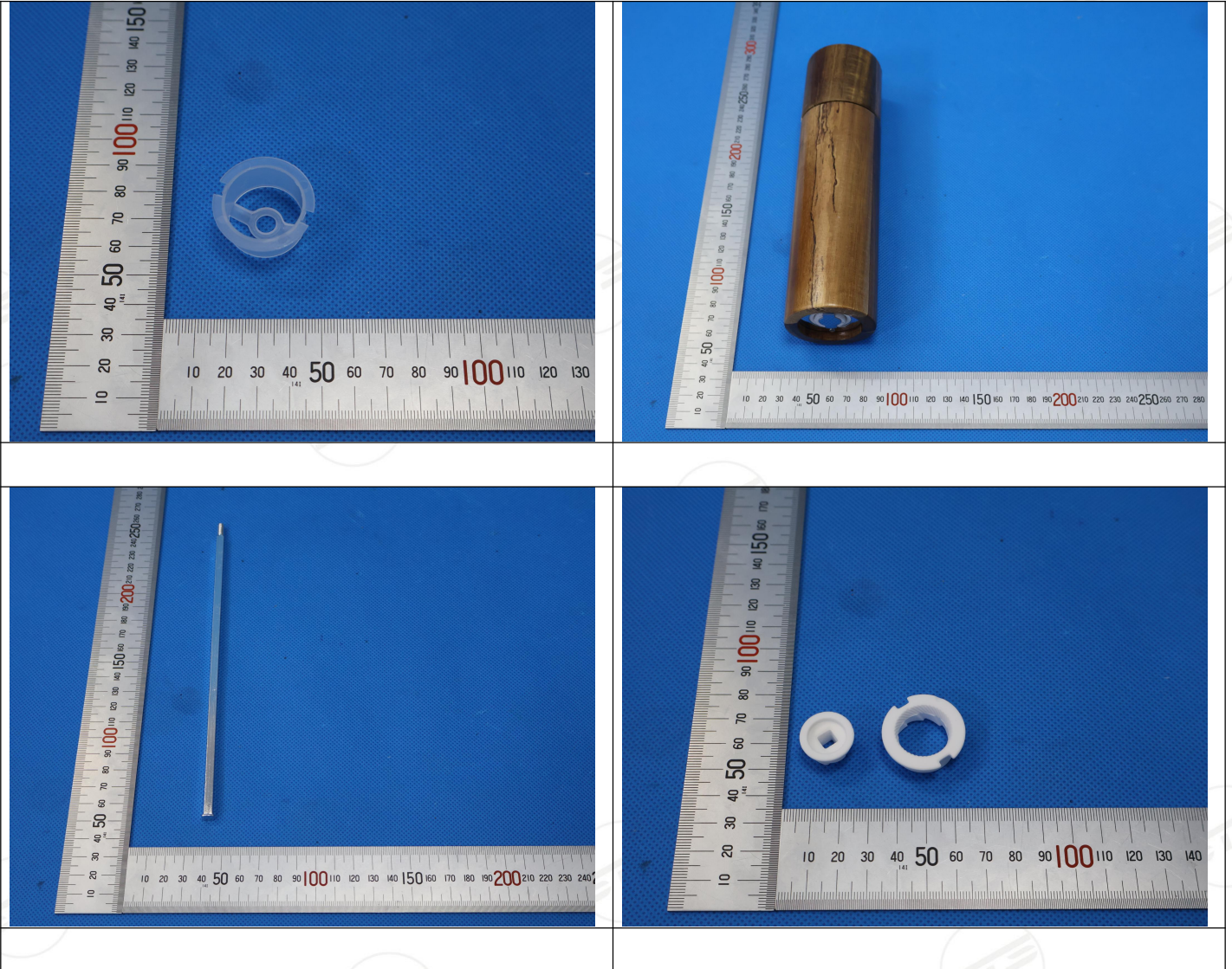
TEST REPORT

Report No.: STSGZ2407313005E

Date: 12-Aug-2024

Page 14 of 16

Photo(s):



This report is issued by the company in accordance with the requirements of the "Conditions of Issuance of Test Reports" printed in the attached page. Unless otherwise stated, the results presented in this report only apply to the samples tested this time. Partial reproduction of this report is not allowed unless approved by the company in writing.

Guangzhou Depuhua Test Services Co. Ltd.

A301&A401, 3/F.&4/F., Xinghui Building, Guanqiao, Shilou, Panyu District, Guangzhou, Guangdong, China
Phone: +86 (0)20-6664 1688 Fax: +86 (0)20-6664 1699 Web: <http://www.dphtl.com/>

e-mail: stsgz@stsapp.com

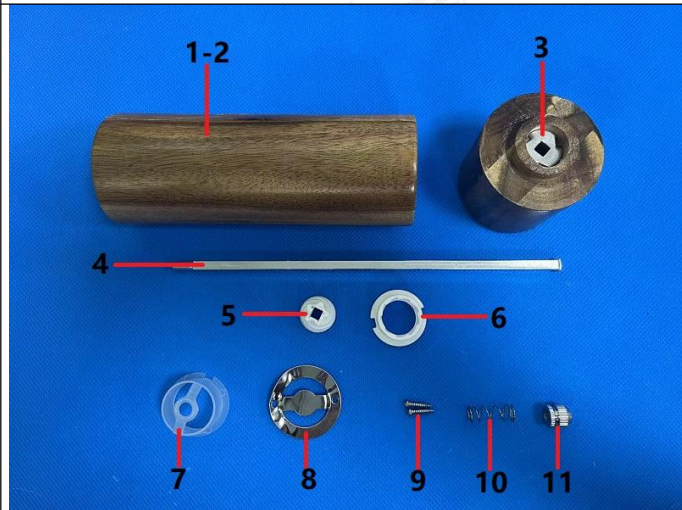
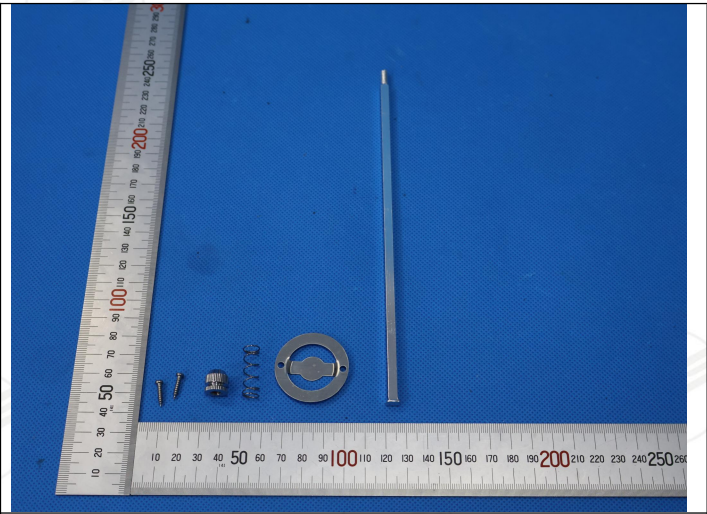
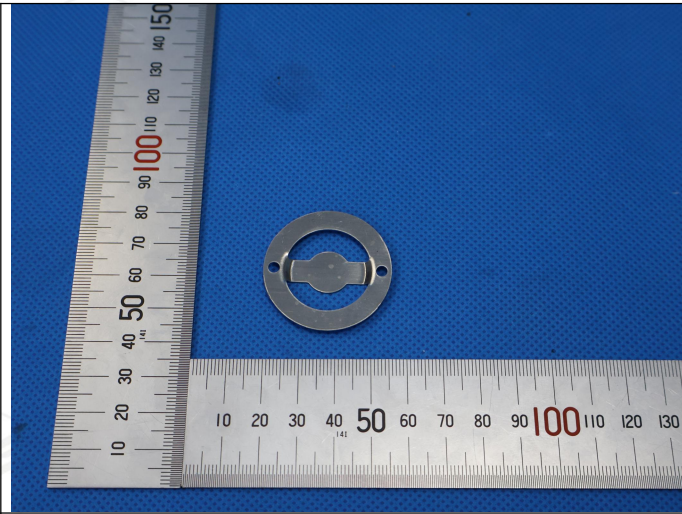


TEST REPORT

Report No.: STSGZ2407313005E

Date: 12-Aug-2024

Page 15 of 16



Product Photo

<<< <<< END OF REPORT >>> >>>

This report is issued by the company in accordance with the requirements of the "Conditions of Issuance of Test Reports" printed in the attached page. Unless otherwise stated, the results presented in this report only apply to the samples tested this time. Partial reproduction of this report is not allowed unless approved by the company in writing.

Guangzhou Depuhua Test Services Co. Ltd.

A301&A401, 3/F.&4/F., Xinghui Building, Guanqiao, Shilou, Panyu District, Guangzhou, Guangdong, China
Phone: +86 (0)20-6664 1688 Fax: +86 (0)20-6664 1699

Web: <http://www.dphtl.com/>

e-mail: stsgz@ststapp.com



TEST REPORT

Report No.: STSGZ2407313005E

Date: 12-Aug-2024

Page 16 of 16

声明 Statement

1. 本检测报告首页所列信息中除样品来源、接样日期、检测日期、检测结果和检测结论外，均由委托方提供，委托方对样品的代表性和资料的真实性负责，本实验室不承担任何相关责任。
The information as listed on the first page of this test report was all provided by the client except the sample from, date received, test period, test results and test conclusion. The client shall be responsible for the representativeness of sample and authenticity of materials, for which STS shall bear no responsibilities.
2. 本检测报告以实测值进行符合性判定，未考虑不确定度所带来的风险，特别约定、标准或规范中有明确规定的除外。此种判定方式所带来的风险由客户自行承担，本实验室不承担相关责任。
The judgment method of determining the conformity in this test report is according to the measured value without considering the risk caused by uncertainty, unless otherwise clearly stipulated in special agreement, standard or specification. The client shall assume the risk caused by the judgment method, and STS shall not bear related responsibilities.
3. 检测报告无批准人签字及“检验检测专用章”无效，未经本实验室书面同意，不得整体或部分复制本报告。
The test report is effective only with both signature and specialized stamp. Without written approval of STS, this report can't be reproduced in full or in part.
4. 本检测报告的检测结果仅对送测样品负责，未加盖资质认定标志的检测报告不对社会具有公证证明作用，对于检测数据、结果的使用，所产生的直接或间接损失及一切法律后果，本实验室不承担任何经济和法律责任。
This test data is only responsible for the tested sample. The data and results provided by the report without CMA accreditation are not to prove to the society, and STS is not responsible for any economic and legal responsibility for the use of the test data, the direct or indirect losses resulting from the use of the test and all legal consequences.
5. 本检测报告中检测项目标注有下划线则该项目不在本实验室资质认定能力范围内，该项目检测结果仅作为客户委托、科研、教学或内部质量控制等目的使用。
The underlined test item in the report is out of the scope of CMA accreditation. The test result only used for client's requirement, scientific researching ,teaching or internal quality control.
6. 其它声明请查阅报告页脚及书面报告末页。
For other statements, please refer to the footer of the report.

This report is issued by the company in accordance with the requirements of the "Conditions of Issuance of Test Reports" printed in the attached page. Unless otherwise stated, the results presented in this report only apply to the samples tested this time. Partial reproduction of this report is not allowed unless approved by the company in writing.

Guangzhou Depuhua Test Services Co. Ltd.

A301&A401, 3/F.&4/F., Xinghui Building, Guanqiao, Shilou, Panyu District, Guangzhou, Guangdong, China
Phone: +86 (0)20-6664 1688 Fax: +86 (0)20-6664 1699

Web:<http://www.dphtl.com/>

e-mail: stsgz@stsapp.com

签发测试报告条款

Conditions of Issuance of Test Reports

1. 广州市德普华检测技术有限公司(以下简称[公司])为提供符合下述条款的测试和报告,而接受有关样品和货品。本公司基于下述条款提供服务,下述条款为本公司与申请服务的个人、企业或公司(以下简称[客户])的协议。

All samples and goods are accepted by the Guangzhou Depuhua Test Services Co., Ltd. (the "Company") solely for testing and reporting in accordance with the following terms and conditions. The company provides its services on the basis that such terms and conditions constitute express agreement between the Company and any person, firm or company requesting its services (the "Clients").
2. 由此测试申请所发出的任何报告(以下简称[报告]),本公司会严格为客户保密。未经本公司的书面同意,报告的整体或部分不得复制,也不得用于广告或授权的其他用途。然而,客户可以将本公司印制的报告或认可的副本,向其客户、供货商或直接相关的其它人出示或提交。除非相关部门、法律或法规要求,否则未经客户同意,本公司不得将报告内容向任何第三方讨论或披露。

Any report issued by Company as a result of this application for testing services (the "Report") shall be issued in confidence to the Clients and the Report will be strictly treated as such by the Company. It may not be reproduced either in its entirety or in part and it may not be used for advertising or other unauthorized purposes without the written consent of the Company. The Clients to whom the Report is issued may, however, show or send it, or a certified copy thereof prepared by the Company to its customer, supplier or other persons directly concerned. The Company will not, without the consent of the Clients, enter into any discussion or correspondence with any third party concerning the contents of the Report, unless required by the relevant governmental authorities, laws or court order.
3. 除非相关部门、法律或法院要求,否则未经公司预先书面同意,本公司毋需,也并无义务到法院对有关报告作证。

The Company shall not be called or be liable to be called to give evidence or testimony on the Report in a court of law without its prior written consent, unless required by the relevant governmental authorities, laws or court orders.
4. 除非本公司进行抽样,并已在报告中说明,否则报告中适用于送测的样品(样品信息为客户提供),不适用于批量。

The Report refers only to the tested sample (Sample information is provided by customer) and does not apply to the bulk, unless the sampling has been carried out by the Company and is stated as such in the Report.
5. 如果本公司确定报告被不当地使用,本公司保留撤回报告的权利,并有权要求其它适当的额外赔偿。

In the event of the improper use of the report as determined by the Company, the Company reserves the right to withdraw it, and to adopt any other additional remedies which may be appropriate.
6. 本公司接受样品进行测试的前提是,该测试报告不能作为针对本公司法律行动的依据。

Samples submitted for testing are accepted on the understanding that the Report issued cannot form the basis of, or be the instrument for, any legal action against the Company.
7. 如因使用本公司中心任何报告内的资料,或任何传播信息所描述与之有关的测试或研究导致的任何损失或损害,本公司概不负责。

The Company will not be liable for or accept responsibility for any loss or damage however arising from the use of information contained in any of its Reports or in any communication whatsoever about its said tests or investigations.
8. 若需要在法院审理程序或者仲裁过程中使用测试报告,客户必须在提交测试样品前将该意图告知本公司。

Clients wishing to use the Report in court proceedings or arbitration shall inform the Company to that effect prior to submitting the sample for testing.
9. 该测试报告的支持数据和信息本公司保存 10 年。个别评审机构有特别要求的,检测数据和报告的保存期可依情况变动。一旦超过上述提交的保存期限,数据和信息将被处理掉。任何情况下,本公司不必提供任何被处理的过期数据或信息。即使本公司事先被告知可能会发生相关的损害,本公司在任何情况下也不必承担任何损害,包括(但不限于)补偿性赔偿、利润损失、数据遗失、或任何形式的特殊损害、附带损害、间接损害、从属损害或任何违反约定、违反承诺、侵权(包括疏忽)、产品责任或其他原因的惩罚性损害。

Subject to the variable length of retention time for test data and report stored hereinto as otherwise specifically required by individual accreditation authorities, the Company will only keep the supporting test data and information of the test report for a period of ten years. The data and information will be disposed of after the aforementioned retention period has elapsed. Under no circumstances shall we provide any data and information which has been disposed of after retention period. Under no circumstances shall we be liable for damage of any kind, including (but not limited to) compensatory damages, lost profits, lost data, or any form of special, incidental, indirect, consequential or punitive damages of any kind, whether based on breach of contract of warranty, tort (including negligence), product liability or otherwise, even if we are informed in advance of the possibility of such damages.
10. 报告的签发记录可通过登录 <http://www.dphtl.com/> 查询。如需进一步查询报告有效性或核实报告,需与本公司联系。

Issuance records of the Report are available on the internet at <http://www.dphtl.com/> Further enquiry of validity or verification of the Report should be addressed to the company.