



# TEST REPORT

Report No.: STSGZ2309013045E

Date: 18-Sep-2023

Page 1 of 16

**Applicant:** Mid Ocean Brands B.V.  
**Address:** 7/F., Kings Tower, 111 King Lam Street, Cheung Sha Wan, Kowloon, Hong Kong

The following sample(s) and sample information was/were submitted and identified by client as:

**Sample Name:** Double wall flask  
**Model:** MO6327  
**Receiving Date:** 1-Sep-2023  
**Test Period:** From 1-Sep-2023 to 7-Sep-2023  
**Add Information:** -

## Test Summary:

#	Test Item(s)	Reference Standard/Method	Result
1	Polycyclic-aromatic hydrocarbons (PAHs) content-- Item 50 of Annex XVII of REACH Regulation (EC) 1907/2006 & amendment (EU) No 1272/2013	AfPS-GS-2019-01:PAK, determined by GC-MS	PASS
2	Phthalate content (DIBP、DEHP、DBP、BBP、DINP、DIDP、DNOP) -Item 51&52 of Annex XVII of REACH Regulation (EC) 1907/2006.	EN 14372:2004 & IEC 62321-8:2017, determined by GC-MS	PASS
3	Formaldehyde - EN 71-9:2005+A1:2007	EN 717-3:1996, analyzed by Spectrophotometer(UV).	PASS
4	Pentachlorophenol (PCP) content - POPs European Regulation (EU) 2019/1021 Annex I	In house method, determined by GC-MS	PASS
<b>Regulation (EC) No 1935/2004, the Commission Regulation (EU) No 10/2011 and its amendment (EU)2023/1442 and (EU) 2018/213 - For Plastic Material</b>			
5	Overall migration	EN 1186-1:2002 & EN 1186-3:2022	PASS
6	Specific migration of Heavy Metal	EN 13130-1: 2004, determined by ICP-OES	PASS
7	Specific migration of Primary Aromatic Amine	EN 13130-1:2004, determined by LC-MS/MS	PASS
8	Bisphenol A (BPA) content	In-house Method,determined by LC-MS	PASS

\*\*\*\*\*

Signed for and on behalf of STS

Mark Mai  
(Technical Director)



This report is issued by the company in accordance with the requirements of the "Conditions of Issuance of Test Reports" printed in the attached page. Unless otherwise stated, the results presented in this report only apply to the samples tested this time. Partial reproduction of this report is not allowed unless approved by the company in writing.

Guangzhou Depuhua Test Services Co. Ltd.

A301&A401, 3/F.&4/F., Xinghui Building, Guanqiao, Shilou, Panyu District, Guangzhou, Guangdong, China  
Phone: +86 (0)20-6664 1688 Fax: +86 (0)20-6664 1699 Web://www.stsgz.com

e-mail: stsgz@ststapp.com



# TEST REPORT

Report No.: STSGZ2309013045E

Date: 18-Sep-2023

Page 2 of 16

#	Test Item(s)	Reference Standard/Method	Result
<b>Regulation (EC) No 1935/2004 and Council of Europe Resolution AP (2004) 5 - For Silicone Material</b>			
9	Overall migration	EN 1186-1:2002 & EN 1186-3:2022	<b>PASS</b>
10	Specific migration of Bisphenol A (BPA)	DD CEN/TS 13130-13:2005, determined by LC/MS	<b>PASS</b>
11	Bisphenol A Contents	In-house Method, determined by LC/MS	<b>PASS</b>
<b>Regulation (EC) No 1935/2004, Council of Europe Resolution CMRes(2013)9 - For Metal Material</b>			
12	Extractable Heavy metal	EN 13130-1:2004&EN 11885:2009, determined by ICP-OES and ICP-MS	<b>PASS</b>
<b>Regulation (EC) No 1935/2004, French Decree 2007- 766 and French Order 25/11/1992- For Silicone Material</b>			
13	Overall migration	EN 1186-1:2002 & EN 1186-3:2022	<b>PASS</b>
14	Peroxide Value	Europe pharmacopoeia,9.0 chapter 2.5.5.	<b>PASS</b>
15	Specific migration of Organotin (as Tin)	EN 13130-1: 2004, determined by ICP-OES	<b>PASS</b>
16	Volatile organic matter	French Arrêté du Novembre 1992 Annex III.	<b>PASS</b>
17	Bisphenol A Contents	In-house Method, determined by LC-MS	<b>PASS</b>
18	Specific migration of Bisphenol A (BPA)	DD CEN/TS 13130-13:2005, determined by LC/MS	<b>PASS</b>

## Result:

- Polycyclic-aromatic hydrocarbons (PAHs) content - Item 50 of Annex XVII of REACH Regulation (EC) 1907/2006 & amendment (EU) No 1272/2013**  
AFPS-GS-2019-01:PAK, determined by GC-MS

Compound	Material			Limit (mg/kg)	RL (mg/kg)
	category I <sup>1</sup>				
	1	2	3		
1 Benz[a]anthracene(BaA) CAS#56-55-3	N.D.	N.D.	N.D.	1	0.2
2 Chrysene(CHR) CAS#218-01-9	N.D.	N.D.	N.D.	1	0.2
3 Benz[b]fluoranthene(BbFA) CAS#205-99-2	N.D.	N.D.	N.D.	1	0.2
4 Benz[k]fluoranthene(BkFA) CAS#207-08-9	N.D.	N.D.	N.D.	1	0.2
5 Benz[j]fluoranthene(BjFA) CAS#205-82-3	N.D.	N.D.	N.D.	1	0.2

This report is issued by the company in accordance with the requirements of the "Conditions of Issuance of Test Reports" printed in the attached page. Unless otherwise stated, the results presented in this report only apply to the samples tested this time. Partial reproduction of this report is not allowed unless approved by the company in writing.

Guangzhou Depuhua Test Services Co. Ltd.

A301&A401, 3/F.&4/F., Xinghui Building, Guanqiao, Shilou, Panyu District, Guangzhou, Guangdong, China  
Phone: +86 (0)20-6664 1688 Fax: +86 (0)20-6664 1699

Web://www.stsgz.com

e-mail: stsgz@stsgz.com



# TEST REPORT

Report No.: STSGZ2309013045E

Date: 18-Sep-2023

Page 3 of 16

6	Benzo[a]pyrene(BaP) CAS#50-32-8	N.D.	N.D.	N.D.	1	0.2
7	Benzo[e]pyrene(BeP) CAS#192-97-2	N.D.	N.D.	N.D.	1	0.2
8	Dibenz [a,h]anthracene (DBahA) CAS#53-70-3	N.D.	N.D.	N.D.	1	0.2
<b>Conclusion</b>		<b>PASS</b>	<b>PASS</b>	<b>PASS</b>	-	-

Remark: (a) mg/kg: milligram per kilogram  
(b) RL: Report limit  
(c) N.D.: Not detected (result is less than RL)  
1: Material category

Category I: Articles come into direct as well as prolonged or short-term repetitive contact with the human skin or the oral cavity, under normal or reasonably foreseeable conditions of use.

Category II : Toys, including activity toys, and childcare articles, that come into direct as well as prolonged or short-term repetitive contact with the human skin or the oral cavity, under normal or reasonably foreseeable conditions of use.

## 2. Phthalate content (DIBP、DEHP、DBP、BBP、DINP、DIDP、DNOP) - Item 51& 52 of Annex XVII of REACH Regulation (EC) 1907/2006 EN 14372:2004 & IEC 62321-8:2017, determined by GC-MS

Compound			Material			Limit (%)	RL (%)
			1	2	3		
1	DBP	Dibutyl Phthalate CAS# 84-74-2	N.D.	N.D.	N.D.	-	0.005
2	BBP	Benzylbutyl Phthalate CAS# 85-68-7	N.D.	N.D.	N.D.	-	0.005
3	DEHP	Bis-(2-ethylhexyl)Phthalate CAS# 117-81-7	N.D.	N.D.	N.D.	-	0.005
4	DIBP	Diisobutyl phthalate CAS# 84-69-5	N.D.	N.D.	N.D.	-	0.005
5	DNOP	Di-n-octyl phthalate CAS# 117-84-0	N.D.	N.D.	N.D.	-	0.005
6	DINP	Di-iso-nonyl phthalate CAS# 28553-12-0	N.D.	N.D.	N.D.	-	0.005
7	DIDP	Diisodecyl phthalate CAS# 26761-40-0	N.D.	N.D.	N.D.	-	0.005
8	Sum of 1, 2, 3 & 4		N.D.	N.D.	N.D.	0.1	-
9	Sum of 5, 6 & 7		N.D.	N.D.	N.D.	0.1	-
<b>Conclusion</b>			<b>PASS</b>	<b>PASS</b>	<b>PASS</b>	-	-

Remark(s): (a) RL: Report limit  
(b) N.D.: Not detected (result is less than RL)

This report is issued by the company in accordance with the requirements of the "Conditions of Issuance of Test Reports" printed in the attached page. Unless otherwise stated, the results presented in this report only apply to the samples tested this time. Partial reproduction of this report is not allowed unless approved by the company in writing.

Guangzhou Depuhua Test Services Co. Ltd.

A301&A401, 3/F.&4/F., Xinghui Building, Guanqiao, Shilou, Panyu District, Guangzhou, Guangdong, China  
Phone: +86 (0)20-6664 1688 Fax: +86 (0)20-6664 1699

Web://www.stsgz.com

e-mail: stsgz@stsgz.com



# TEST REPORT

Report No.: STSGZ2309013045E

Date: 18-Sep-2023

Page 4 of 16

### 3. Formaldehyde - EN 71-9:2005+A1:2007 With reference to EN 717-3:1996, analyzed by UV Spectrophotometer (UV).

Compound		Material	Limit (mg/kg)	RL (mg/kg)
		4		
1	Formaldehyde	N.D.	80	10
<b>Conclusion</b>		<b>PASS</b>	-	-

Remark: (a) mg/kg: milligram per kilogram  
(b) RL: Report limit.  
(c) N.D.: Not detected (result is less than RL)

### 4. Pentachlorophenol (PCP) content - POPs European Regulation (EU) 2019/1021 Annex I In house method, determined by GC-MS

Compound		Material	Limit (mg/kg)	RL (mg/kg)
		4		
1	Pentachlorophenol(PCP) CAS#87-86-5	N.D.	Not Detected	5
<b>Conclusion</b>		<b>PASS</b>	-	-

Remark(s): (a) RL: Report limit  
(b) N.D.: Not detected (result is less than RL)  
(c) mg/kg = milligram per kilogram = ppm

### Regulation (EC) No 1935/2004, the Commission Regulation (EU) No 10/2011 and its amendment (EU)2023/1442 and (EU) 2018/213 - For Plastic Material

### 5. Overall migration EN 1186-1:2002 & EN 1186-3:2022

Test specification		Result(s)			Limit (mg/dm <sup>2</sup> )	RL (mg/dm <sup>2</sup> )
		1				
		1 <sup>st</sup>	2 <sup>nd</sup>	3 <sup>rd</sup>		
1	50% Ethanol, 100°C, 1h	N.D.	N.D.	N.D.	10	3
2	3% Acetic acid, 100°C, 1h	N.D.	N.D.	N.D.	10	3
<b>Conclusion</b>		-	-	<b>PASS</b>	-	-

Remark(s): (a) mg/dm<sup>2</sup>: milligram square decimetre  
(b) RL: Report limit  
(c) N.D.: Not detected (result is less than RL)

This report is issued by the company in accordance with the requirements of the "Conditions of Issuance of Test Reports" printed in the attached page. Unless otherwise stated, the results presented in this report only apply to the samples tested this time. Partial reproduction of this report is not allowed unless approved by the company in writing.

Guangzhou Depuhua Test Services Co. Ltd.

A301&A401, 3/F.&4/F., Xinghui Building, Guanqiao, Shilou, Panyu District, Guangzhou, Guangdong, China  
Phone: +86 (0)20-6664 1688 Fax: +86 (0)20-6664 1699

Web://www.stsgz.com

e-mail: stsgz@stsgz.com



# TEST REPORT

Report No.: STSGZ2309013045E

Date: 18-Sep-2023

Page 5 of 16

## 6. Specific migration of Heavy metal EN 13130-1: 2004, determined by ICP-OES

Test condition: 3% Acetic acid, 100°C were filled and placed indoors for 24h

Compound		Result(s)			Limit (mg/kg)	RL (mg/kg)
		1				
		1 <sup>st</sup>	2 <sup>nd</sup>	3 <sup>rd</sup>		
1	Aluminum (Al)	N.D.	N.D.	N.D.	1	0.1
2	Ammonium	N.D.	N.D.	N.D.	-	0.1
3	Antimony (Sb)	N.D.	N.D.	N.D.	0.04	0.01
4	Arsenic (As)	N.D.	N.D.	N.D.	Not Detected	0.01
5	Barium (Ba)	N.D.	N.D.	N.D.	1	0.1
6	Cadmium(Cd)	N.D.	N.D.	N.D.	Not Detected	0.002
7	Calcium(Ca)	N.D.	N.D.	N.D.	-	0.1
8	Chromium (Cr)	N.D.	N.D.	N.D.	Not Detected	0.01
9	Cobalt (Co)	N.D.	N.D.	N.D.	0.05	0.01
10	Copper (Cu)	N.D.	N.D.	N.D.	5	0.5
11	Europium (Eu)	N.D.	N.D.	N.D.	0.05*	0.01
12	Gadolinium (Gd)	N.D.	N.D.	N.D.	0.05*	0.01
13	Iron (Fe)	N.D.	N.D.	N.D.	48	1
14	Lanthanum (La)	N.D.	N.D.	N.D.	0.05*	0.01
15	Lead(Pb)	N.D.	N.D.	N.D.	Not Detected	0.01
16	Lithium (Li)	N.D.	N.D.	N.D.	0.6	0.1
17	Magnesium(Mg)	N.D.	N.D.	N.D.	-	0.1
18	Manganese (Mn)	N.D.	N.D.	N.D.	0.6	0.05
19	Mercury(Hg)	N.D.	N.D.	N.D.	Not Detected	0.01
20	Nickel (Ni)	N.D.	N.D.	N.D.	0.02	0.01
21	Potassium(K)	N.D.	N.D.	N.D.	-	0.1

This report is issued by the company in accordance with the requirements of the "Conditions of Issuance of Test Reports" printed in the attached page. Unless otherwise stated, the results presented in this report only apply to the samples tested this time. Partial reproduction of this report is not allowed unless approved by the company in writing.

Guangzhou Depuhua Test Services Co. Ltd.

A301&A401, 3/F.&4/F., Xinghui Building, Guanqiao, Shilou, Panyu District, Guangzhou, Guangdong, China  
Phone: +86 (0)20-6664 1688 Fax: +86 (0)20-6664 1699

Web://www.stsgz.com

e-mail: stsgz@stsgz.com



# TEST REPORT

Report No.: STSGZ2309013045E

Date: 18-Sep-2023

Page 6 of 16

22	Sodium(Na)	N.D.	N.D.	N.D.	-	0.1
23	Terbium (Tb)	N.D.	N.D.	N.D.	0.05*	0.01
24	Zinc (Zn)	N.D.	N.D.	N.D.	5	1
	<b>Conclusion</b>	-	-	<b>PASS</b>	-	-

Remark(s): (a) mg/kg: milligram per kilogram

(b) RL: Report limit

(c) N.D.: Not detected (result is less than RL)

(d) The sum of all lanthanide substances migrating to the food or food simulant does not exceed the specific migration limit of 0,05 mg/kg

## 7. Specific migration of Primary Aromatic Amine EN 13130-1:2004, determined by LC-MS/MS

Test Condition: 3%Acetic acid, 100°C, 1h

Compound	Result			Limit (mg/kg)	RL (mg/kg)
	1				
	1 <sup>st</sup>	2 <sup>nd</sup>	3 <sup>rd</sup>		
1 Primary Aromatic Amines(PAAs)	N.D.	N.D.	N.D.	0.01	0.002
<b>Conclusion</b>	-	-	<b>PASS</b>	-	-

Compound	Material			Limit (mg/kg)	RL (mg/kg)
	1				
	1 <sup>st</sup>	2 <sup>nd</sup>	3 <sup>rd</sup>		
1 biphenyl-4-ylamine 4- aminobiphenyl xenylamine CAS No.:92-67-1	N.D.	N.D.	N.D.	0.01	0.002
2 Benzidine CAS No.:92-87-5	N.D.	N.D.	N.D.	0.01	0.002
3 4-chloro-o-toluidine CAS No.:95-69-2	N.D.	N.D.	N.D.	0.01	0.002
4 2-Naphthylamine CAS No.:91-59-8	N.D.	N.D.	N.D.	0.01	0.002
5 o-aminoazotoluene 4- amino-2',3- dimethylazobenzene 4-o-tolylazo-o-toluidine CAS No.:97-56-3	N.D.	N.D.	N.D.	0.01	0.002
6 5-nitro-o-toluidine CAS No.:99-55-8	N.D.	N.D.	N.D.	0.01	0.002
7 4-Chloroaniline CAS No.:106-47-8	N.D.	N.D.	N.D.	0.01	0.002

This report is issued by the company in accordance with the requirements of the "Conditions of Issuance of Test Reports" printed in the attached page. Unless otherwise stated, the results presented in this report only apply to the samples tested this time. Partial reproduction of this report is not allowed unless approved by the company in writing.

Guangzhou Depuhua Test Services Co. Ltd.

A301&amp;A401, 3/F.&amp;4/F., Xinghui Building, Guanqiao, Shilou, Panyu District, Guangzhou, Guangdong, China

e-mail: stsgz@stsapp.com

Phone: +86 (0)20-6664 1688

Fax: +86 (0)20-6664 1699

Web://www.stsgz.com



# TEST REPORT

Report No.: STSGZ2309013045E

Date: 18-Sep-2023

Page 7 of 16

8	4-methoxy-m-phenylenediamine CAS No.:615-05-4	N.D.	N.D.	N.D.	0.01	0.002
9	4,4'-methylenedianiline 4,4'-diaminodiphenylmethane CAS No.:101-77-9	N.D.	N.D.	N.D.	0.01	0.002
10	3,3'-dichlorobenzidine 3,3'-dichlorobiphenyl-4,4'-ylenediamine CAS No.:91-94-1	N.D.	N.D.	N.D.	0.01	0.002
11	3,3'-dimethoxybenzidine o-dianisidine CAS No.:119-90-4	N.D.	N.D.	N.D.	0.01	0.002
12	3,3'-dimethylbenzidine 4,4'-bi-o-toluidine CAS No.:119-93-7	N.D.	N.D.	N.D.	0.01	0.002
13	4,4'-methylenedi-o-toluidine CAS No.:838-88-0	N.D.	N.D.	N.D.	0.01	0.002
14	6-methoxy-m-toluidine p- cresidine CAS No.:120-71-8	N.D.	N.D.	N.D.	0.01	0.002
15	4,4'-methylene-bis-(2-chloro- aniline) 2,2'-dichloro-4,4'-methylene-dianiline CAS No.:101-14-4	N.D.	N.D.	N.D.	0.01	0.002
16	4,4'-oxydianiline CAS No.:101-80-4	N.D.	N.D.	N.D.	0.01	0.002
17	4,4'-thiodianiline CAS No.:139-65-1	N.D.	N.D.	N.D.	0.01	0.002
18	o-toluidine 2-aminotoluene CAS No.:95-53-4	N.D.	N.D.	N.D.	0.01	0.002
19	4-methyl-m-phenylenediamine CAS No.:95-80-7	N.D.	N.D.	N.D.	0.01	0.002
20	2,4,5-trimethylaniline CAS No.:137-17-7	N.D.	N.D.	N.D.	0.01	0.002
21	o-anisidine 2-methoxyaniline CAS No.:90-04-0	N.D.	N.D.	N.D.	0.01	0.002
22	4-amino azobenzene CAS No.:60-09-3	N.D.	N.D.	N.D.	0.01	0.002
23	1,5- Diaminenaphthalene CAS No.:2242-62-01	N.D.	N.D.	N.D.	0.01	0.002
24	Aniline (ANL) CAS No.:62-53-3	N.D.	N.D.	N.D.	0.01	0.002
25	2,4-Dimethylaniline (2,4-DMA) CAS No.:95-68-1	N.D.	N.D.	N.D.	0.01	0.002
26	2,6-Dimethylaniline (2,6-DMA) CAS No.:87-62-7	N.D.	N.D.	N.D.	0.01	0.002

This report is issued by the company in accordance with the requirements of the "Conditions of Issuance of Test Reports" printed in the attached page. Unless otherwise stated, the results presented in this report only apply to the samples tested this time. Partial reproduction of this report is not allowed unless approved by the company in writing.

Guangzhou Depuhua Test Services Co. Ltd.

A301&A401, 3/F.&4/F., Xinghui Building, Guanqiao, Shilou, Panyu District, Guangzhou, Guangdong, China  
Phone: +86 (0)20-6664 1688 Fax: +86 (0)20-6664 1699

Web://www.stsgz.com

e-mail: stsgz@stsgz.com



# TEST REPORT

Report No.: STSGZ2309013045E

Date: 18-Sep-2023

Page 8 of 16

27	m-Phenylenediamine (m- PDA) CAS No.:108-45-2	N.D.	N.D.	N.D.	0.01	0.002
28	p-Phenylenediamine (p-PDA) CAS No.:106-50-3	N.D.	N.D.	N.D.	0.01	0.002
29	2,6-Toluenediamine (2,6- TDA) CAS No.:823-40-5	N.D.	N.D.	N.D.	0.01	0.002

Remark(s): (a) mg/kg: milligram per kilogram  
(b) RL: Report limit  
(c) N.D.: Not detected (result is less than RL)

## 8. Bisphenol A (BPA) content In-house Method,determined by LC-MS

Test Item		Material	Client's Limit (mg/kg)	RL (mg/kg)
		1		
1	Bisphenol A	N.D.	Not Detected	0.01
<b>Conclusion</b>		<b>PASS</b>	-	-

Remark(s): (a) RL: Report limit  
(b) N.D.: Not detected (result is less than RL)

## Regulation (EC) No 1935/2004 and Council of Europe Resolution AP (2004) 5 - For Silicone Material

## 9. Overall Migration for Silicone Materials in Contact with Foodstuffs EN 1186-1:2002 & EN 1186-3:2022

Test specification		Material	Limit (mg/dm <sup>2</sup> )	RL (mg/dm <sup>2</sup> )
		2-3rd		
1	50% Ethanol, 100°C, 1h	N.D.	10	3
2	3% Acetic acid, 100°C, 1h	N.D.	10	3
<b>Conclusion</b>		<b>PASS</b>	-	-

Remark(s): (a) mg/dm<sup>2</sup>: milligram square decimetre  
(b) RL: Report limit  
(c) N.D.: Not detected (result is less than RL)

This report is issued by the company in accordance with the requirements of the "Conditions of Issuance of Test Reports" printed in the attached page. Unless otherwise stated, the results presented in this report only apply to the samples tested this time. Partial reproduction of this report is not allowed unless approved by the company in writing.

Guangzhou Depuhua Test Services Co. Ltd.

A301&A401, 3/F.&4/F., Xinghui Building, Guanqiao, Shilou, Panyu District, Guangzhou, Guangdong, China  
Phone: +86 (0)20-6664 1688 Fax: +86 (0)20-6664 1699

Web://www.stsgz.com

e-mail: stsgz@stsgz.com





# TEST REPORT

Report No.: STSGZ2309013045E

Date: 18-Sep-2023

Page 9 of 16

## 10. Specific migration of Bisphenol A DD CEN/TS 13130-13:2005, determined by LC-MS

Test Condition: 3%Acetic acid, 100°C, 1h

Compound		Material		Limit (mg/kg)	RL (mg/kg)
		2-3rd			
1	Bisphenol A (BPA)	N.D.		0.05	0.01
<b>Conclusion</b>		<b>PASS</b>		-	-

Remark(s): (a) mg/kg: milligram per kilogram  
(b) RL: Report limit  
(c) N.D.: Not detected (result is less than RL)

## 11. Bisphenol A (BPA) content In-house Method,determined by LC-MS

Test Item		Material		Client's Limit (mg/kg)	RL (mg/kg)
		2			
1	Bisphenol A	N.D.		Not Detected	0.01
<b>Conclusion</b>		<b>PASS</b>		-	-

Remark(s): (a) RL: Report limit  
(b) N.D.: Not detected (result is less than RL)

## Regulation (EC) No 1935/2004, Council of Europe Resolution CMRes(2013)9 - For Metal Material

## 12. Specific Migration of Heavy Metal EN 13130-1: 2004&EN 11885:2009,determined by ICP-OES and ICP-MS

Test condition: Water,100°C,After filling, leave at room temperature for 24 hours , 3 times

Elements		Material		Limit (mg/kg)		RL (mg/kg)	
		5					
		1 <sup>st</sup> + 2 <sup>nd</sup>	3 <sup>rd</sup>	1 <sup>st</sup> + 2 <sup>nd</sup>	3 <sup>rd</sup>	1 <sup>st</sup> + 2 <sup>nd</sup>	3 <sup>rd</sup>
1	Tin (Sn)	N.D.	N.D.	700	100	2	1
2	Copper (Cu)	N.D.	N.D.	28	4	2	1
3	Iron (Fe)	N.D.	N.D.	280	40	2	1

This report is issued by the company in accordance with the requirements of the "Conditions of Issuance of Test Reports" printed in the attached page. Unless otherwise stated, the results presented in this report only apply to the samples tested this time. Partial reproduction of this report is not allowed unless approved by the company in writing.

Guangzhou Depuhua Test Services Co. Ltd.

A301&A401, 3/F.&4/F., Xinghui Building, Guanqiao, Shilou, Panyu District, Guangzhou, Guangdong, China  
Phone: +86 (0)20-6664 1688 Fax: +86 (0)20-6664 1699

Web://www.stsgz.com

e-mail: stsgz@stsapp.com



# TEST REPORT

Report No.: STSGZ2309013045E

Date: 18-Sep-2023

Page 10 of 16

4	Manganese (Mn)	N.D.	N.D.	12.6	1.8	0.2	0.1
5	Zinc (Zn)	N.D.	N.D.	35	5	2	1
6	Aluminum (Al)	N.D.	N.D.	35	5	2	1
7	Barium (Ba)	N.D.	N.D.	8.4	1.2	0.2	0.1
8	Chromium (Cr)	N.D.	N.D.	1.75	0.25	0.1	0.05
9	Nickel (Ni)	N.D.	N.D.	0.98	0.14	0.1	0.05
10	Lithium (Li)	N.D.	N.D.	0.336	0.048	0.02	0.01
11	Beryllium (Be)	N.D.	N.D.	0.07	0.01	0.002	0.001
12	Vanadium (V)	N.D.	N.D.	0.07	0.01	0.002	0.001
13	Cobalt (Co)	N.D.	N.D.	0.14	0.02	0.002	0.001
14	Molybdenum (Mo)	N.D.	N.D.	0.84	0.12	0.02	0.01
15	Silver (Ag)	N.D.	N.D.	0.56	0.08	0.02	0.01
16	Antimony (Sb)	N.D.	N.D.	0.28	0.04	0.02	0.01
17	Lead (Pb)	N.D.	N.D.	0.07	0.01	0.002	0.001
18	Arsenic (As)	N.D.	N.D.	0.014	0.002	0.002	0.001
19	Cadmium (Cd)	N.D.	N.D.	0.035	0.005	0.002	0.001
20	Mercury (Hg)	N.D.	N.D.	0.021	0.003	0.002	0.001
21	Thallium (Tl)	N.D.	N.D.	0.0007	0.0001	0.0002	0.0001
22	Magnesium (Mg)	2.774	N.D.	-	-	2	1
23	Titanium (Ti)	N.D.	N.D.	-	-	2	1
	<b>Conclusion</b>	<b>PASS</b>	<b>PASS</b>	-	-	-	-

Elements	Material	Material		Limit (mg/kg)		RL (mg/kg)	
		6		1 <sup>st</sup> + 2 <sup>nd</sup>	3 <sup>rd</sup>	1 <sup>st</sup> + 2 <sup>nd</sup>	3 <sup>rd</sup>
		1 <sup>st</sup> + 2 <sup>nd</sup>	3 <sup>rd</sup>				
1	Tin (Sn)	N.D.	N.D.	700	100	2	1
2	Copper (Cu)	N.D.	N.D.	28	4	2	1

This report is issued by the company in accordance with the requirements of the "Conditions of Issuance of Test Reports" printed in the attached page. Unless otherwise stated, the results presented in this report only apply to the samples tested this time. Partial reproduction of this report is not allowed unless approved by the company in writing.

Guangzhou Depuhua Test Services Co. Ltd.

A301&A401, 3/F.&4/F., Xinghui Building, Guanqiao, Shilou, Panyu District, Guangzhou, Guangdong, China  
Phone: +86 (0)20-6664 1688 Fax: +86 (0)20-6664 1699

Web://www.stsgz.com

e-mail: stsgz@stsgz.com



# TEST REPORT

Report No.: STSGZ2309013045E

Date: 18-Sep-2023

Page 11 of 16

3	Iron (Fe)	N.D.	N.D.	280	40	2	1
4	Manganese (Mn)	N.D.	N.D.	12.6	1.8	0.2	0.1
5	Zinc (Zn)	N.D.	N.D.	35	5	2	1
6	Aluminum (Al)	N.D.	N.D.	35	5	2	1
7	Barium (Ba)	N.D.	N.D.	8.4	1.2	0.2	0.1
8	Chromium (Cr)	N.D.	N.D.	1.75	0.25	0.1	0.05
9	Nickel (Ni)	N.D.	N.D.	0.98	0.14	0.1	0.05
10	Lithium (Li)	N.D.	N.D.	0.336	0.048	0.02	0.01
11	Beryllium (Be)	N.D.	N.D.	0.07	0.01	0.002	0.001
12	Vanadium (V)	N.D.	N.D.	0.07	0.01	0.002	0.001
13	Cobalt (Co)	N.D.	N.D.	0.14	0.02	0.002	0.001
14	Molybdenum (Mo)	N.D.	N.D.	0.84	0.12	0.02	0.01
15	Silver (Ag)	N.D.	N.D.	0.56	0.08	0.02	0.01
16	Antimony (Sb)	N.D.	N.D.	0.28	0.04	0.02	0.01
17	Lead (Pb)	N.D.	N.D.	0.07	0.01	0.002	0.001
18	Arsenic (As)	N.D.	N.D.	0.014	0.002	0.002	0.001
19	Cadmium (Cd)	N.D.	N.D.	0.035	0.005	0.002	0.001
20	Mercury (Hg)	N.D.	N.D.	0.021	0.003	0.002	0.001
21	Thallium (Tl)	N.D.	N.D.	0.0007	0.0001	0.0002	0.0001
22	Magnesium (Mg)	2.880	N.D.	-	-	2	1
23	Titanium (Ti)	N.D.	N.D.	-	-	2	1
	<b>Conclusion</b>	<b>PASS</b>	<b>PASS</b>	-	-	-	-

Remark(s): (a) mg/kg: milligram per kilogram  
(b) RL: Report limit  
(c) N.D.: Not detected (result is less than RL)

This report is issued by the company in accordance with the requirements of the "Conditions of Issuance of Test Reports" printed in the attached page. Unless otherwise stated, the results presented in this report only apply to the samples tested this time. Partial reproduction of this report is not allowed unless approved by the company in writing.

Guangzhou Depuhua Test Services Co. Ltd.

A301&A401, 3/F.&4/F., Xinghui Building, Guanqiao, Shilou, Panyu District, Guangzhou, Guangdong, China  
Phone: +86 (0)20-6664 1688 Fax: +86 (0)20-6664 1699

Web://www.stsgz.com

e-mail: stsgz@stsgz.com



# TEST REPORT

Report No.: STSGZ2309013045E

Date: 18-Sep-2023

Page 12 of 16

Regulation (EC) No 1935/2004, French Decree 2007- 766 and French Order 25/11/1992- For Silicone Material

## 13. Overall migration EN 1186-1:2002 & EN 1186-3:2022

Test specification		Result(s)	Limit (mg/dm <sup>2</sup> )	RL (mg/dm <sup>2</sup> )
		2 <sup>-3rd</sup>		
1	50% Ethanol, 100°C, 1h	N.D.	10	3
2	3% Acetic acid, 100°C, 1h	N.D.	10	3
<b>Conclusion</b>		<b>PASS</b>	-	-

Remark(s): (a) mg/dm<sup>2</sup>: milligram square decimetre  
(b) RL: Report limit  
(c) N.D.: Not detected (result is less than RL)

## 14. Peroxide Value Europe pharmacopoeia,9.0 chapter 2.5.5.

Compound		Material	Requirement
		2	
1	Peroxide Value	Negative	Negative
<b>Conclusion</b>		<b>PASS</b>	-

## 15. Specific migration of Organotin(as Tin) EN 13130-1:2004, determined by ICP-OES

Test condition:3% Acetic acid, 100°C, 1h

Compound		Material	Limit (mg/kg)	RL (mg/kg)
		2		
1	Organotin(as Sn)	N.D.	0.1	0.01
<b>Conclusion</b>		<b>PASS</b>	-	-

Remark(s): (a) mg/kg: milligram per kilogram  
(b) RL: Report limit  
(c) N.D.: Not detected (result is less than RL)

This report is issued by the company in accordance with the requirements of the "Conditions of Issuance of Test Reports" printed in the attached page. Unless otherwise stated, the results presented in this report only apply to the samples tested this time. Partial reproduction of this report is not allowed unless approved by the company in writing.

Guangzhou Depuhua Test Services Co. Ltd.

A301&A401, 3/F.&4/F., Xinghui Building, Guanqiao, Shilou, Panyu District, Guangzhou, Guangdong, China  
Phone: +86 (0)20-6664 1688 Fax: +86 (0)20-6664 1699

Web://www.stsgz.com

e-mail: stsgz@stsgz.com



# TEST REPORT

Report No.: STSGZ2309013045E

Date: 18-Sep-2023

Page 13 of 16

## 16. Volatile organic matter French Arrêté du Novembre 1992 Annex III.

Test condition: 200°C, 4h

Compound		Material	Limit (%)	RL (%)
		2		
1	Volatile Compounds	0.23	0.5	0.1
<b>Conclusion</b>		<b>PASS</b>	-	-

Remark(s): (a) RL: Report limit

## 17. Bisphenol A Contents In-house Method, determined by LC-MS

Compound		Material	Limit (mg/kg)	RL (mg/kg)
		2		
1	Bisphenol A	N.D.	Prohibit	0.1
<b>Conclusion</b>		<b>PASS</b>	-	-

Remark(s): (a) mg/kg: milligram per kilogram  
(b) RL: Report limit  
(c) N.D.: Not detected (result is less than RL)

## 18. Specific migration of Bisphenol A DD CEN/TS 13130-13:2005, determined by LC-MS

Test Condition: 3% Acetic acid, 100°C, 1h

Compound		Material	Limit (mg/kg)	RL (mg/kg)
		2-3rd		
1	Bisphenol A (BPA)	N.D.	0.05	0.01
<b>Conclusion</b>		<b>PASS</b>	-	-

Remark(s): (a) mg/kg: milligram per kilogram  
(b) RL: Report limit  
(c) N.D.: Not detected (result is less than RL)

This report is issued by the company in accordance with the requirements of the "Conditions of Issuance of Test Reports" printed in the attached page. Unless otherwise stated, the results presented in this report only apply to the samples tested this time. Partial reproduction of this report is not allowed unless approved by the company in writing.

Guangzhou Depuhua Test Services Co. Ltd.

A301&A401, 3/F.&4/F., Xinghui Building, Guanqiao, Shilou, Panyu District, Guangzhou, Guangdong, China  
Phone: +86 (0)20-6664 1688 Fax: +86 (0)20-6664 1699

Web://www.stsgz.com

e-mail: stsgz@stsgz.com



# TEST REPORT

Report No.: STSGZ2309013045E

Date: 18-Sep-2023

Page 14 of 16

## Material List:

Material #	Position / Sample Description	Material
1	Black plastic,lid(inner)	PP
2	Brown silicone,seal ring	Silicone
3	Transparent black plastic,lid	-
4	Brown bamboo,bottle	-
5	Silvery metal,bottle	Stainless steel 304
6	Silvery metal,strainer	Stainless steel 304

Remark(s): (a) The test material point is selected by client,the chemical test conclusions in the report only apply to the test material.

## Photo(s):



This report is issued by the company in accordance with the requirements of the "Conditions of Issuance of Test Reports" printed in the attached page. Unless otherwise stated, the results presented in this report only apply to the samples tested this time. Partial reproduction of this report is not allowed unless approved by the company in writing.

Guangzhou Depuhua Test Services Co. Ltd.

A301&A401, 3/F.&4/F., Xinghui Building, Guanqiao, Shilou, Panyu District, Guangzhou, Guangdong, China  
Phone: +86 (0)20-6664 1688 Fax: +86 (0)20-6664 1699

Web://www.stsgz.com

e-mail: stsgz@stsgapp.com

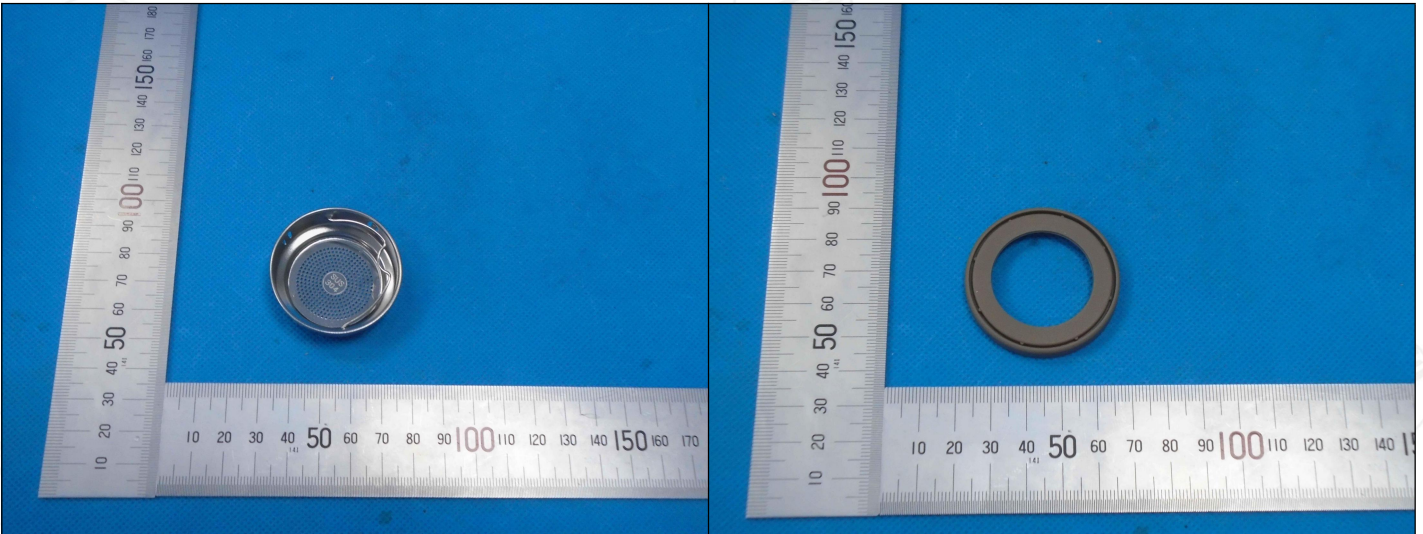


# TEST REPORT

Report No.: STSGZ2309013045E

Date: 18-Sep-2023

Page 15 of 16



Test sample Photo



Product Photo

/

/

<<< <<< END OF REPORT >>> >>>

This report is issued by the company in accordance with the requirements of the "Conditions of Issuance of Test Reports" printed in the attached page. Unless otherwise stated, the results presented in this report only apply to the samples tested this time. Partial reproduction of this report is not allowed unless approved by the company in writing.

Guangzhou Depuhua Test Services Co. Ltd.

A301&A401, 3/F.&4/F., Xinghui Building, Guanqiao, Shilou, Panyu District, Guangzhou, Guangdong, China  
Phone: +86 (0)20-6664 1688 Fax: +86 (0)20-6664 1699

e-mail: stsgz@stsg.com

Web://www.stsg.com



# TEST REPORT

Report No.: STSGZ2309013045E

Date: 18-Sep-2023

Page 16 of 16

## 声明 Statement

1. 本检测报告首页所列信息中除样品来源、接样日期、检测日期、检测结果和检测结论外，均由委托方提供，委托方对样品的代表性和资料的真实性负责，本实验室不承担任何相关责任。  
The information as listed on the first page of this test report was all provided by the client except the sample from, date received, test period, test results and test conclusion. The client shall be responsible for the representativeness of sample and authenticity of materials, for which STS shall bear no responsibilities.
2. 本检测报告以实测值进行符合性判定，未考虑不确定度所带来的风险，特别约定、标准或规范中有明确规定的除外。此种判定方式所带来的风险由客户自行承担，本实验室不承担相关责任。  
The judgment method of determining the conformity in this test report is according to the measured value without considering the risk caused by uncertainty, unless otherwise clearly stipulated in special agreement, standard or specification. The client shall assume the risk caused by the judgment method, and STS shall not bear related responsibilities.
3. 检测报告无批准人签字及“检验检测专用章”无效，未经本实验室书面同意，不得整体或部分复制本报告。  
The test report is effective only with both signature and specialized stamp. Without written approval of STS, this report can't be reproduced in full or in part.
4. 本检测报告的检测结果仅对送测样品负责，未加盖资质认定标志的检测报告不对社会具有公证证明作用，对于检测数据、结果的使用，所产生的直接或间接损失及一切法律后果，本实验室不承担任何经济和法律责任。  
This test data is only responsible for the tested sample. The data and results provided by the report without CMA accreditation are not to prove to the society, and STS is not responsible for any economic and legal responsibility for the use of the test data, the direct or indirect losses resulting from the use of the test and all legal consequences.
5. 本检测报告中检测项目标注有下划线则该项目不在本实验室资质认定能力范围内，该项目检测结果仅作为客户委托、科研、教学或内部质量控制等目的使用。  
The underlined test item in the report is out of the scope of CMA accreditation. The test result only used for client's requirement, scientific researching ,teaching or internal quality control.
6. 其它声明请查阅报告页脚及书面报告末页。  
For other statements, please refer to the footer of the report.

This report is issued by the company in accordance with the requirements of the "Conditions of Issuance of Test Reports" printed in the attached page. Unless otherwise stated, the results presented in this report only apply to the samples tested this time. Partial reproduction of this report is not allowed unless approved by the company in writing.

Guangzhou Depuhua Test Services Co. Ltd.

A301&A401, 3/F.&4/F., Xinghui Building, Guanqiao, Shilou, Panyu District, Guangzhou, Guangdong, China  
Phone: +86 (0)20-6664 1688 Fax: +86 (0)20-6664 1699

e-mail: stsgz@ststapp.com

Web://www.stsgz.com



# 签发测试报告条款

## Conditions of Issuance of Test Reports

1. 广州市德普华检测技术有限公司(以下简称[公司])为提供符合下述条款的测试和报告,而接受有关样品和货品。本公司基于下述条款提供服务,下述条款为本公司与申请服务的个人、企业或公司(以下简称[客户])的协议。

All samples and goods are accepted by the Guangzhou Depuhua Test Services Co., Ltd. (the "Company") solely for testing and reporting in accordance with the following terms and conditions. The company provides its services on the basis that such terms and conditions constitute express agreement between the Company and any person, firm or company requesting its services (the "Clients").
2. 由此测试申请所发出的任何报告(以下简称[报告]),本公司会严格为客户保密。未经本公司的书面同意,报告的整体或部分不得复制,也不得用于广告或授权的其他用途。然而,客户可以将本公司印制的报告或认可的副本,向其客户、供货商或直接相关的其它人出示或提交。除非相关部门、法律或法规要求,否则未经客户同意,本公司不得将报告内容向任何第三方讨论或披露。

Any report issued by Company as a result of this application for testing services (the "Report") shall be issued in confidence to the Clients and the Report will be strictly treated as such by the Company. It may not be reproduced either in its entirety or in part and it may not be used for advertising or other unauthorized purposes without the written consent of the Company. The Clients to whom the Report is issued may, however, show or send it, or a certified copy thereof prepared by the Company to its customer, supplier or other persons directly concerned. The Company will not, without the consent of the Clients, enter into any discussion or correspondence with any third party concerning the contents of the Report, unless required by the relevant governmental authorities, laws or court order.
3. 除非相关部门、法律或法院要求,否则未经公司预先书面同意,本公司毋需,也并无义务到法院对有关报告作证。

The Company shall not be called or be liable to be called to give evidence or testimony on the Report in a court of law without its prior written consent, unless required by the relevant governmental authorities, laws or court orders.
4. 除非本公司进行抽样,并已在报告中说明,否则报告中适用于送测的样品(样品信息为客户提供),不适用于批量。

The Report refers only to the tested sample (Sample information is provided by customer) and does not apply to the bulk, unless the sampling has been carried out by the Company and is stated as such in the Report.
5. 如果本公司确定报告被不当地使用,本公司保留撤回报告的权利,并有权要求其它适当的额外赔偿。

In the event of the improper use of the report as determined by the Company, the Company reserves the right to withdraw it, and to adopt any other additional remedies which may be appropriate.
6. 本公司接受样品进行测试的前提是,该测试报告不能作为针对本公司法律行动的依据。

Samples submitted for testing are accepted on the understanding that the Report issued cannot form the basis of, or be the instrument for, any legal action against the Company.
7. 如因使用本公司中心任何报告内的资料,或任何传播信息所描述与之有关的测试或研究导致的任何损失或损害,本公司概不负责。

The Company will not be liable for or accept responsibility for any loss or damage however arising from the use of information contained in any of its Reports or in any communication whatsoever about its said tests or investigations.
8. 若需要在法院审理程序或者仲裁过程中使用测试报告,客户必须在提交测试样品前将该意图告知本公司。

Clients wishing to use the Report in court proceedings or arbitration shall inform the Company to that effect prior to submitting the sample for testing.
9. 该测试报告的支持数据和信息本公司保存 10 年。个别评审机构有特别要求的,检测数据和报告的保存期可依情况变动。一旦超过上述提交的保存期限,数据和信息将被处理掉。任何情况下,本公司不必提供任何被处理的过期数据或信息。即使本公司事先被告知可能会发生相关的损害,本公司在任何情况下也不必承担任何损害,包括(但不限于)补偿性赔偿、利润损失、数据遗失、或任何形式的特殊损害、附带损害、间接损害、从属损害或任何违反约定、违反承诺、侵权(包括疏忽)、产品责任或其他原因的惩罚性损害。

Subject to the variable length of retention time for test data and report stored hereinto as otherwise specifically required by individual accreditation authorities, the Company will only keep the supporting test data and information of the test report for a period of ten years. The data and information will be disposed of after the aforementioned retention period has elapsed. Under no circumstances shall we provide any data and information which has been disposed of after retention period. Under no circumstances shall we be liable for damage of any kind, including (but not limited to) compensatory damages, lost profits, lost data, or any form of special, incidental, indirect, consequential or punitive damages of any kind, whether based on breach of contract of warranty, tort (including negligence), product liability or otherwise, even if we are informed in advance of the possibility of such damages.
10. 报告的签发记录可通过登录 [www.stsgz.com](http://www.stsgz.com) 查询。如需进一步查询报告有效性或核实报告,需与本公司联系。

Issuance records of the Report are available on the internet at [www.stsgz.com](http://www.stsgz.com). Further enquiry of validity or verification of the Report should be addressed to the company.